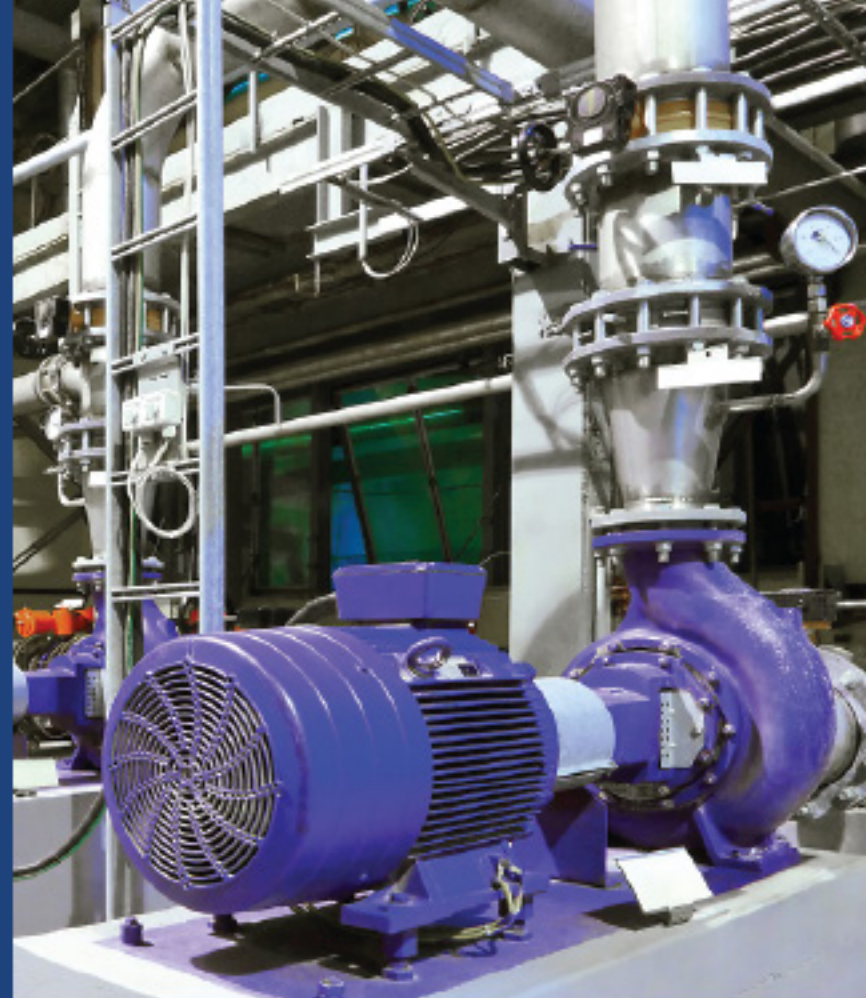


JCP&L

Commercial and Industrial Incentives Guide

February 2024



Jersey Central[®]
Power & Light

A FirstEnergy Company

Jersey Central Power & Light

Commercial and Industrial Incentives Guide

Table of Contents

1.) Commercial & Industrial Incentives - General Requirements.....	3
2.) Custom.....	6
3.) Lighting & Lighting Controls.....	9
3a.) Midstream – Instant Discount Lighting Incentives.....	17
4.) HVAC.....	19
4a.) Midstream – Instant Discount HVAC Incentive.....	22
5.) Refrigeration.....	23
6.) Variable Frequency Drive.....	25
7.) Electrically Commutated Motors.....	26
8.) Commercial Kitchen Equipment.....	27
9.) Commercial Appliances.....	30
10.) Heat Pump Water Heaters.....	30
11.) Plug Load Controls.....	31
12.) Office Equipment.....	31
13.) Residential Appliances.....	32
14.) Agricultural.....	33

Jersey Central Power & Light

Commercial and Industrial Incentives - General Requirements

Approval Requirements

- For prescriptive measures, if your equipment was purchased and installed and you did not obtain pre-approval, you may apply for incentives no later than 180 days of project completion (completion is defined as all equipment being installed and operable).
- Custom measures require approval prior to the purchase and/or installation of equipment
- Projects that require or request pre-approval must acknowledge and accept the incentive offer within 30 days
- Projects that did not require pre-approval must acknowledge and accept the incentive offer within 15 days
- Equipment for which participants previously received incentives through the NJCEP Program or other programs offered by any of the New Jersey investor-owned utilities may not be eligible for incentives through this program
- **Note: 180 day look back projects are NOT eligible for the JCP&L Commercial Energy Efficiency Financing**

Utility Customer Information Requirements

- A complete copy of a JCP&L utility bill for the service address & account number must be submitted with the application. For the purposes of the program, the company list on the bill is the applicant customer company. The bill must be no more than 12 months old, and must NOT be classified as one of the following: Residential Service (RS), Residential Time-of-Day Service (RST), or Residential Geothermal & Heat Pump Service (RGT).
- When the applicant customer company is owned by a corporate entity whose name does not match the utility bill, documentation must be provided that establishes ownership and control of the customer. This can include, but is not limited, an explanation on customer letterhead explaining the relationship between the involved entities.
- The On-Line-Application (OLA) must be digitally signed through Adobe Sign by an authorized individual within the customer company/organization. The signatories contact information must be listed on the OLA form.

Program Ally Requirements

- Program Allies must register with the Program prior to submitting an application on behalf of a customer.

Payee Documentation Requirements

- A W9 form for the payee must be submitted with each application. The W9 must have a handwritten signature, digital signatures are not acceptable.
- When the applicant customer company is designated as the sole or partial payee, the check will only be mailed to the mailing address on file.

Jersey Central Power & Light

Commercial and Industrial Incentives - General Requirements

Invoice & Installation Documentation Requirements

- Documentation required for payment will include but is not limited to:
 1. Material Invoice(s)
 2. Labor Invoice(s)
 3. Incentive Request Form (if applicable)
 4. Payee W9
 5. Customer Signed Letter of Attestation (LOA)
- The material invoice must show equipment purchase date. Equipment eligible for this program must have been purchased on or after July 1, 2021. Equipment for custom measures must have been purchased post-approval.
- The material invoice must include a description of the equipment. The invoice should include the model #, quantity, and unit price.
- The labor invoice must clearly separate the labor cost from material cost.
- Where the invoice does not clearly separate costs, the billing contractor must provide a revised invoice or note on company letterhead that provides the required cost information.
- Self-installations are allowable. For projects that are self-installed by the participating customer, this must be identified on the letter of attestation.

Inspection Requirements

- Projects are subject to the Program's inspection. Projects selected for inspection will be chosen via random selection, or at the Program Manager's discretion.
- All participants must allow reasonable access for site inspections. All projects are subject to inspection prior the payment of incentives to verify project completion.
- Projects that require prior approval will be subject to inspection prior to the issuance of the incentive offer to verify pre-measure conditions.

Jersey Central Power & Light

Commercial and Industrial Incentives - General Requirements

Incentive Limits

- Incentives are capped at total equipment cost (excluding taxes).

Incentive Expiration Dates and Extension Requests

- For projects that were pre-approved, the Incentive Request Form; Letter of Attestation and material/labor invoice must be submitted within 90-days of offer acceptance or the offer will expire.
- For projects that did not gain pre-approval, the Incentive Requests Form; Letter of Attestation and material/labor invoice must be submitted within 15-days of offer acceptance or the offer will expire.
- The Program Manager reserves the right to cancel or rescind incentive offers when the required final documentation has not been received prior the expiration of the offer.
- Extensions will be considered on a case by case basis. Requests for extension must be made prior to the expiration of the offer. Requests should be sent directly to the Program Manager.
- Requests for extension must clearly state the reasons for the project delay, the remedy sought, and any other information relevant to the project. The Program Manager reserves the right to request additional information to make a determination on the validity of the request.
- Projects that expire may resubmitted to the program. Applications resubmitted will be subject to the rules and requirements of the program at the time of resubmission.

Commercial and Industrial Incentives - Custom

The Custom pathway provides our C&I customers the opportunity to implement non-standard, more complex electric energy efficiency measures that are not defined as a prescriptive measure.

Through the Custom pathway, we help customers develop tailored projects that best meet their unique facility and organizational goals. Custom Measures do not include maintenance or repair measures such as compressed air system leak repair. Custom projects are typically multi-measure or optimization solutions for which customers earn performance-based incentives using \$/kWh.

CUSTOM MEASURE INCENTIVE OVERVIEW			
Custom Measure Overview	Incentive	Unit	Eligibility Standard
TYPICAL CUSTOM PROJECT EXAMPLES:			
Compressed Air	Incentives are calculated based on the lesser of two factors: 50% of project cost, OR \$0.16/kWh saved in the first year.	Per kWh or Cost Cap	Measures/equipment must not be prescriptive measures and meet mandated/industry standards & codes where applicable. Chillers and Custom HVAC measures must be >5% more efficient than applicable codes and standards. Applicability of codes & standards is subject to Program Manager discretion. State energy code is ASHRAE 90.1-2016. Other standards include ENERGY STAR®, Design Lights Consortium®, NEMA, Federal Title 10, among others.
Refrigeration			
Data Center Equipment/Servers			
HVAC/Chillers			
HVAC Controls			
Motors/VFD - Large			
Building Improvements			
Process Improvements			
Agricultural Lighting/Process			
Custom Lighting			

Custom Measure Requirements

General Requirements

- Proposed measures will not be eligible for Custom Measure incentives if a Prescriptive incentive is available. Proposed measures must meet or exceed mandated/industry standards & codes where applicable. (For chillers, see specific requirements). Applicability of codes & standards is subject to Program Manager discretion. State energy code is ASHRAE 90.1-2016. In cases where ASHRAE 90.1-2016 does not apply, other applicable standard will be used, such as the Consortium for Energy Efficiency (CEE), EPA ENERGY STAR, Design Lights Consortium, NEMA, Federal Title 10 or other established resources such as: current New Jersey baseline studies and other market research; the program experience of the Commercial/Industrial Program Manager; experience of the New Jersey utilities; or utility/public program experience from other comparable jurisdictions.
- Program approval is required prior to purchase and installation for custom measures.

Custom Measure Requirements

General Requirements

- Repair and/or maintenance measures are not allowed. Custom incentives are only available for energy efficient measures. Definition of a repair/maintenance measure (eg, compressed air leak repair) subject to Program Manager discretion.
- For projects that include both custom and prescriptive measures, the measures must be submitted under separate incentive applications under each respective pathway. The Program Manager may allow certain measures to be considered wholly under custom where savings and costs are not easily separated, subject to Program Manager Discretion.

Chiller & Custom HVAC Requirements

- Chillers and Custom HVAC units rated efficiency at AHRI conditions must be >5% more efficient than what ASHRAE 90.1-2016 specifies to qualify for custom incentives. For water cooled centrifugal chillers that are designed to operate at other than the AHRI standard conditions the procedure in ASHRAE Standard 90.1-2016, Section 6.4.1.2.1 can be used by the applicant to adjust the manufacturer's published efficiency at non-AHRI conditions to the efficiency at AHRI standard conditions. The applicant will need to provide the manufacturer's non-AHRI ratings as well as the calculations for the chiller efficiency at AHRI conditions.

Lighting Requirements

- For LED projects where the product is qualified by either Design Lights Consortium® (DLC) or ENERGY STAR but the qualification category is not presently offered prescriptive the following additional information should be included with this application:
 - (a) Confirmation of existing fixture wattage (ballast/lamp or other system documentation)
 - (b) Documentation supporting existing and proposed lighting run hours

Baseline Requirements

- All custom projects must establish a baseline from which energy and energy cost savings are measured.
- The baseline for most projects will be existing conditions. Projects that involve end of life replacement, capacity changes or other significant use changes must establish a code or industry standard baseline.
- Information supporting the proposed project exceeding ASHRAE 90.1-2016 or applicable industry standard must be provided in the application submission.
- Please consult the Program Manager if additional assistance is required to determine the applicable baseline for your project.

Project Cost Requirements

- Projects are required to provide the total proposed cost of the project. Any prescriptive or ineligible measure costs should be excluded.
- All custom projects must establish the incremental cost of the project. Incremental cost is defined as the difference in material and/or labor costs between the proposed equipment and its respective baseline component.

Project Cost Requirements

- Generally, the baseline cost will be zero (\$0) for most projects where the baseline is existing conditions. Therefore the incremental cost will equal the proposed cost.
- The Program Manager reserves the right to determine whether a non zero baseline cost is applicable for a projects where the baseline is determined to not be existing conditions, or where special circumstances prevail.
- The applicant may estimate costs using cost estimation manuals, vendor quotes, design team calculations, online pricing, or other reasonable methods. Project cost should include, at a minimum, relevant material and labor/installation costs.
- Sales tax may be included as part of the eligible project cost.
- Costs must only include the costs related to the custom measure(s). The Program Manager reserves the right to determine if specific costs are measure related or not.

Energy Savings Eligibility and Requirements

- Projects are required to provide the total energy savings of the measure(s). The energy savings must be in alignment with the chosen project baseline, and must be explicitly calculated.
- Pre and post installation metering may be required. Adjusted savings calculations may be required depending on the results of the metering, subject to Program Manager discretion.
- The energy savings calculations must only include the energy savings related to the custom measure(s). The Program Manager reserves the right to determine if specific savings are measure related or not.

Pre and Post Installation Metering Requirements

- Certain measures may require pre & post-installation metering, trending analysis, and/or a Statement of Substantial Completion by the installing contractor. This will be requested by the Program Manager during application review.

Incentive Limits

- Incentives are limited to 50% of the total project cost including labor for Custom projects.

Commercial and Industrial Incentives - Lighting and Lighting Controls

Lighting Requirements

- Incentives for LED measures are available for replacements of existing HID, incandescent/halogen or fluorescent lighting only.
- Each LED fixture, bulb or lamp must appear on either the current Design Lights Consortium® (DLC) or ENERGY STAR qualified product list and be listed as one of the measure types on the incentive rates table to be eligible to receive an incentive.
- The Primary Use Category or Indoor/Outdoor rating of the product must align with the way the product is installed as per the category definitions set by DLC or ENERGY STAR. For example, a fixture designated by DLC under the primary use category Outdoor Full-Cutoff Wall-Mounted Area Luminaires will not receive an incentive when installed in an interior space.
- Printout or screenshot from the DLC or ENERGY STAR qualified product list showing the specific manufacturer name and model number is required. The DLC/ENERGY STAR logo appearing on a specification sheet is not considered sufficient proof of current listing.
- LED products which are listed by DLC or ENERGY STAR not appearing on the incentive rates table may be eligible for Custom Electric incentives.
- Products listed by DLC under a Specialty category do not qualify for prescriptive incentives.
- For LED Horticultural lighting, prescriptive incentive is offered only for direct HID fixture replacements. All other project types will be evaluated through Custom.
- Integrated control incentives are only available for eligible DLC or ENERGY STAR fixtures. The DLC or ENERGY STAR listing must list the controls as a feature.
- If more than one eligible lighting control device is associated with the same eligible fixture, the incentive paid will be for the lighting control device that yields the largest incentive only.
- Projects with multiple measures should list the locations of measures/equipment separately to the extent possible. For lighting projects where this is not practical, the OLA may be submitted with as few measures as possible as long as the measures accurately depict the number of existing products and proposed products for the purposes of energy savings. Such projects will require a separate excel line by line (LxL) for inspection purposes.

Instant Discounts: Lighting

- JCP&L customers must pursue Instant Discount rebates through the program approved participating distributors wherever an Instant Discount is available for qualified lighting equipment and the total project incentives total \$7,500 or less.
- JCP&L customers may submit a Prescriptive Lighting application that includes Instant Discount eligible products only when the application submission totals more than \$7,500 in Instant Discount incentives or includes both of the following:
 1. Products eligible for Instant Discounts.
 2. Prescriptive Lighting products not eligible for instant discounts.
- However, no product will receive both an Instant Discount and a separate Prescriptive Lighting rebate.
- Instant Discount lighting projects that exceed \$25,000 in incentive funds must submit for pre-approval before completing the sale. Certain projects above the \$25,000 threshold may be found eligible if submitted for pre-approval prior to the sale of eligible lighting products. The customer may submit a Prescriptive Lighting application for consideration by the program if their Instant Discount Lighting Application above the \$25,000 threshold was denied.

Commercial and Industrial Incentives - Lighting and Lighting Controls

Ineligible Measures

- LED screw-in/plug-in bulb incentives are available for replacement of, CFL, incandescent or halogen bulbs only. When replacing HID bulbs, LED screw-in or plug-in bulbs are not eligible for incentives. Exceptions: Pin-based CFL to DLC qualified pin-based LEDs and HID to Mogul-based LED lamps.
- Measures that do not save energy are not eligible for incentives.
- LED to LED retrofits or replacements are not eligible for incentives.
- Incentives will not be provided for the installation of screw-in or plug-in lighting measures in non-permanent and non-hardwired fixtures. For example, screw-in or plug-in lamps installed in refrigerator, oven, floor or desk lamps are not eligible for incentives.
- Lighting measures installed for use as retail display lighting do not qualify for incentives.
- Incentives for fixtures and lamps/bulbs will only be paid on a 1:1 basis. The lesser of the existing and proposed quantities will be the basis for payment. For example: If 10 existing inefficient fixtures are removed and replaced with 12 energy efficiency fixtures, the incentive will only be paid for 10 fixtures. For energy savings purposes, the true project scope must be provided. Project scopes that propose retrofits/replacements on a non 1:1 basis must save energy to qualify.

Lighting Control Requirements

- All lighting controls must be listed by UL or other OSHA-approved Nationally Recognized Testing Laboratory (NRTL) in accordance with applicable US standards.
- Lighting control incentives are only available if controlling eligible, energy-efficient lighting fixtures that meet the lighting program requirements. Refer to the incentive rate table for a list of eligible controlled fixture types.
- Both hard-wired (power) and battery-powered lighting controls qualify.
- There is no incentive for occupancy sensors installed in a space where they are prohibited by state or local building codes or safety codes.
- Incentives are not available for the following space types in all cases: corridors, stairwells, lobbies, restrooms, and elevators.

LIGHTING MEASURE INCENTIVE OVERVIEW

Lighting Equipment Description	Incentive	Unit	Eligibility Standard
LED TROFFER LUMINAIRES			
1×4 Luminaires for Ambient Lighting of Interior Commercial Spaces - <i>Eligible for Instant Discount</i>	\$30.00	Per Fixture	DLC Primary Use Designation as shown and DLC Category: Indoor Luminaires
2×2 Luminaires for Ambient Lighting of Interior Commercial Spaces - <i>Eligible for Instant Discount</i>	\$30.00		
2×4 Luminaires for Ambient Lighting of Interior Commercial Spaces - <i>Eligible for Instant Discount</i>	\$35.00		
LED LINEAR AMBIENT LUMINAIRES			
Direct Linear Ambient Luminaires or Linear Ambient Luminaires w/ Indirect component : 2 ft. - <i>Eligible for Instant Discount</i>	\$20.00	Per Fixture	DLC Primary Use Designation as shown and DLC Category: Indoor Luminaires
Direct Linear Ambient Luminaires or Linear Ambient Luminaires w/ Indirect component : 3 ft.	\$30.00		
Direct Linear Ambient Luminaires or Linear Ambient Luminaires w/ Indirect component : 4 ft. - <i>Eligible for Instant Discount</i>	\$40.00		
Direct Linear Ambient Luminaires or Linear Ambient Luminaires w/ Indirect component : 6 ft.	\$45.00		
Direct Linear Ambient Luminaires or Linear Ambient Luminaires w/ Indirect component : 8 ft. - <i>Eligible for Instant Discount</i>	\$50.00		
LED STAIRWELL LUMINAIRES			
Stairwell and Passageway Luminaires	\$50.00	Per Fixture	DLC Primary Use Designation as shown and DLC Category: Indoor Luminaires & Outdoor Luminaires

LIGHTING MEASURE INCENTIVE OVERVIEW

Lighting Equipment Description	Incentive	Unit	Eligibility Standard
LED INTERIOR DIRECTIONAL LUMINAIRES			
Wall-Wash Luminaires	\$30.00	Per Fixture	DLC Primary Use Designation as shown and DLC Category: Indoor Luminaires
Track or Mono-Point Luminance Directional Luminaires	\$30.00	Per Head	
LED REFRIGERATED DISPLAY CASE LUMINAIRES			
Refrigerated Case Luminaires - 4'	\$15.00	Per Fixture	DLC Primary Use Designation as shown and DLC Category: Indoor Luminaires
Refrigerated Case Luminaires - 5'	\$20.00		
Refrigerated Case Luminaires - 6'	\$25.00		
Display Case Luminaires	\$15.00		
LED HIGH/LOW BAY LUMINAIRES			
High-Bay Aisle Luminaire - <i>Eligible for Instant Discount</i>	\$100 - 5000 - 9999 lumens \$150 - 10,000 - 19,999 lumens \$200 - 20,000 - 29,999 lumens \$300 - 30,000 - 39,999 lumens \$400 - >40,000 lumens	Per Fixture	DLC Primary Use Designation as shown and DLC Category: Indoor Luminaires
High-Bay and Low Bay Luminaires for Commercial and Industrial Buildings - <i>Eligible for Instant Discount</i>			
LED EXTERIOR LUMINAIRES			
Architectural Flood and Spot Luminaires	\$50 - up to 4,999 lumens \$125 - 5,000 - 9,999 lumens \$175 - 10,000 - 19,999 lumens \$225 - 20,000 - 29,999 \$275 - 30,000 - 39,999 lumens \$350 - >40,000 lumens	Per Fixture	DLC Primary Use Designation as shown and DLC Category: Outdoor Luminaires
Bollards			
Fuel Pump Canopy Luminaires			
Landscape/Accent Flood and Spot Luminaires			
Retrofit Kits for Large Outdoor Pole/Arm-Mounted Area and Roadway Luminaires			
Outdoor Pole/Arm-Mounted Area and Roadway Luminaires			
Outdoor Pole/Arm-Mounted Decorative Luminaires			
Outdoor Wall-Mounted Area Luminaires (Full, Semi, and Non-Cutoff)			
Parking Garage Luminaires			

LIGHTING MEASURE INCENTIVE OVERVIEW

Lighting Equipment Description	Incentive	Unit	Eligibility Standard
LED RETROFIT KITS			
Integrated Retrofit Kits for 1x4 Luminaires	\$20.00	Per Kit	DLC Primary Use Designation as shown and DLC Category: Indoor Luminaires
Integrated Retrofit Kits for 2x2 Luminaires	\$20.00		
Integrated Retrofit Kits for 2x4 Luminaires	\$35.00		
LED Linear Style Retrofit Kit for 1x4 Fixtures	\$15.00	Per Kit	
LED Linear Style Retrofit Kit for 2x2 Fixtures	\$15.00		
LED Linear Style Retrofit Kit for 2x4 Fixtures	\$25.00		
Retrofit Kits for Direct Linear Ambient Luminaires - 2ft	\$15.00	Per Fixture	
Retrofit Kits for Direct Linear Ambient Luminaires - 4ft	\$15.00		
Retrofit Kits for Direct Linear Ambient Luminaires - 8ft	\$25.00		
Retrofit Kits for High-Bay Luminaires for Commercial and Industrial Buildings	\$60.00		
Retrofit Kits for Low-Bay Luminaires for Commercial and Industrial Buildings	\$60.00		
LED ENERGY STAR FIXTURES			
Accent Lights	\$5 - < 1,499 lumens \$10 - 1,500 - 2,999 lumens \$15 - >3,000 lumens	Per Fixture	ENERGY STAR Certified Light Fixtures
Bath Vanity Lights			
Ceiling Mount			
Close to Ceiling Mount			
Cove Mount			
Decorative Pendant			
Downlight Pendant			
Downlight Recessed			
Downlight Solid State Retrofit - <i>Eligible for Instant Discount</i>			
Downlight Surface Mount			
Linear Strip			
Other			
Outdoor (Post Mount)			
Outdoor (Various Types)			
Pendant			
Security			
Under Cabinet			
Wall Sconces			
Wrapped Lens			

LIGHTING MEASURE INCENTIVE OVERVIEW

Lighting Equipment Description	Incentive	Unit	Eligibility Standard
LED Mogul-Screw Base Replacement for HID lamps with or without external driver (E39 Replacement type B & C ONLY)			
HID Replacement Lamps	\$50 - ≤125w \$75 - >125w - ≤250w \$100 - >250w	Per Lamp	DLC Category: Mogul (E39) Screw-base Replacements for HID Lamps
LED LAMPS - ENERGY STAR			
BR20	\$3.00	Per Lamp	ENERGY STAR Certified Light Bulbs
Other	\$1.50		
PAR16 - <i>Eligible for Instant Discount</i>	\$5.00		
PAR20 - <i>Eligible for Instant Discount</i>	\$5.00		
PAR30, PAR30L PAR30S - <i>Eligible for Instant Discount</i>	\$8.00		
PAR38 - <i>Eligible for Instant Discount</i>	\$8.00		
R14 - <i>Eligible for Instant Discount</i>	\$5.00		
R16/MR16 - <i>Eligible for Instant Discount</i>	\$5.00		
R30	\$8.00		
LED LAMPS - Replacement Lamps (plug and play) (UL Type A)			
Vertically-Mounted Lamps	\$8.50	Per Lamp	DLC General Application as shown and DLC Category: Four Pin-Base Replacement Lamps for CFLs
Horizontally-Mounted Lamps			
2G11 Base Lamps - <i>Eligible For Instant Discount</i>			

LIGHTING MEASURE INCENTIVE OVERVIEW

Lighting Equipment Description	Incentive	Unit	Eligibility Standard
LED LAMPS - Replacement Lamps 2' - 8' and U Bend (Type A, B, AB & C)			
LED Linear Replacement Lamps - 2 ft - <i>Eligible for Instant Discount</i>	\$4.00	Per Lamp	DLC General Application as shown and DLC Category: Linear Replacement Lamps
LED Linear Replacement Lamps - 3 ft - <i>Eligible for Instant Discount</i>			
LED Linear Replacement Lamps - 4 ft - <i>Eligible for Instant Discount</i>			
LED Linear Replacement Lamps - 8 ft - <i>Eligible for Instant Discount</i>			
LED Linear Replacement Lamps - U Bend - <i>Eligible for Instant Discount</i>			
LED SIGN LIGHTING			
Exterior/Dusk-to-Dawn, Interior and 24 hour application Covered Above by DLC Exterior Fixture types	\$2.00	Per Watt Reduced	DLC Primary Use Designation per LED EXTERIOR LUMINAIRES incentive categories and DLC Category: Outdoor Luminaires
OTHER LIGHTING			
Linear Fluorescent HE T8	\$0.25	Per Lamp	UL or other OSHA-approved Nationally Recognized Testing Laboratory (NRTL) in accordance with applicable US standards
Street/Roadway and Area Lighting	\$50 - up to 4,999 lumens \$125 - 5000 - 9,999 lumens \$175 - 10,000 - 19,999 lumens \$225 - 20,000 - 29,999 lumens \$275 - 30,000 - 39,999 lumens \$350 - >40,000 lumens	Per Fixture	DLC Primary Use Designation per LED EXTERIOR LUMINAIRES incentive categories and DLC Category: Outdoor Luminaires
LED Horticultural Lighting Fixture (Controlled Environment Agriculture) - Operation Hours greater than or equal to 3,000 per year	\$250 - 500w or above \$150 - Below 500w		
LED Horticultural Lighting Fixture (Controlled Environment Agriculture) - Operation Hours Below 3,000 per year	\$200 - 500w or above \$50 - Below 500w		DLC Horticultural Lighting Qualified Products only. For direct replacement of HID fixtures only.

LIGHTING CONTROLS EQUIPMENT INCENTIVE OVERVIEW

Lighting Controls Equipment Description	Incentive	Unit	Energy Efficiency Standard
NETWORKED LIGHTING CONTROLS			
NLC System Controlling Efficient Luminaires	\$0.60	Per Watt Controlled	DLC listed. UL or other OSHA-approved Nationally Recognized Testing Laboratory in accordance with applicable US standards
DUAL DAYLIGHT/OCCUPANCY CONTROLS			
Dual Daylight & Occupancy Sensor (DOS)	\$50 - ≥150w controlled per fixture	Per Fixture	UL or other OSHA-approved Nationally Recognized Testing Laboratory in accordance with applicable US standards
	\$30 - ≥20w controlled per control		
DAYLIGHT CONTROLS			
Daylight Continuous Dimming Control	\$40 - ≥150w controlled per fixture	Per Fixture	UL or other OSHA-approved UL or other OSHA-approved Nationally Recognized Testing Laboratory in accordance with applicable US standards
	\$20 - ≥20w controlled per fixture		
Exterior Lighting Control – Fixture with Integrated Controls	\$50 - ≥150w controlled per fixture		
	\$30 - ≥20w controlled per fixture		
OCCUPANCY/VACANCY CONTROLS			
Vacancy or Occupancy Control (Switch/Wall/External Mounted)	\$40 - ≥150w controlled per fixture	Per Fixture	UL or other OSHA-approved Nationally Recognized Testing Laboratory in accordance with applicable US standards
	\$20 - ≥20w controlled per fixture		
Vacancy or Occupancy Control (Integrated into new fixture)	\$10.00	Per Control	
Occupancy Dimming Control (Integrated into new fixture)			

Midstream - Instant Discount Lighting Incentives

Lighting Instant Discount (Midstream) Requirements

- Instant Discounts (Midstream incentives) are provided at the distributor/vendor level
- JCP&L customers must pursue Instant Discount rebates through the program approved participating distributors wherever an Instant Discount is available for qualified lighting equipment and the total project incentives total \$7,500 or less.
- JCP&L customers may submit a Prescriptive Lighting application that includes Instant Discount eligible products only when the application submission totals more than \$7,500 in Instant Discount incentives or includes both of the following:
 1. Products eligible for Instant Discounts.
 2. Prescriptive Lighting products not eligible for instant discounts.
- However, no product will receive both an Instant Discount and a separate Prescriptive Lighting rebate.
- Instant Discount lighting projects that exceed \$25,000 in incentive funds must submit for pre-approval before completing the sale. Certain projects above the \$25,000 threshold may be found eligible if submitted for pre-approval prior to the sale of eligible lighting products. The customer may submit a Prescriptive Lighting application for consideration by the program if their Instant Discount Lighting Application above the \$25,000 threshold was denied.
- Minimum customer contribution of \$1 per product.
- Instant Discount Applications may require pre-approval. Thresholds defined below:
 - No pre-approval required for incentives up to \$25,000
 - Incentives above \$25,000 require pre-approval

Midstream - Instant Discount Lighting Incentives			
Midstream Lighting Description	Incentive	Unit	Energy Efficiency Standard
LED LAMPS - ENERGY STAR			
PAR16	\$5.00	Per Lamp	ENERGY STAR
LED TROFFER LUMINAIRES			
1x4 Luminaires for Ambient Lighting of Interior Commercial Spaces	\$30.00	Per Fixture	DLC Primary Use Designation as shown and DLC Category: Indoor Luminaires
2x2 Luminaires for Ambient Lighting of Interior Commercial Spaces	\$30.00		
2x4 Luminaires for Ambient Lighting of Interior Commercial Spaces	\$35.00		

Midstream - Instant Discount Lighting Incentives

Midstream Lighting Description	Incentive	Unit	Energy Efficiency Standard
LED LAMPS - ENERGY STAR			
PAR20	\$5.00	Per Lamp	ENERGY STAR
PAR30, PAR30L PAR30S	\$8.00		
PAR38	\$8.00		
R14	\$5.00		
MR16/R16	\$5.00		
LED ENERGY STAR FIXTURES			
Downlight Solid State Retrofit	\$5 - < 1,499 lumens \$10 - 1,500 - 2,999 lumens \$15 - >3,000 lumens	Per Lamp	ENERGY STAR
LED LAMPS - Replacement Lamps 2' - 8' and U Bend (Type A, B, AB & C)			
LED Linear Replacement Lamps - 2 ft	\$4.00	Per Lamp	DLC
LED Linear Replacement Lamps - 3 ft			
LED Linear Replacement Lamps - 4 ft			
LED Linear Replacement Lamps - 8 ft			
LED Linear Replacement Lamps - U Bend			
OTHER LED			
2G11 Base Lamps	\$8.50	Per Lamp	DLC
LED HIGH/LOW BAY LUMINAIRES			
High-Bay and Low Bay Luminaires for Commercial and Industrial Buildings, High-Bay Aisle Luminaires	\$100 - 5,000 - 9,999 lumens \$150 - 10,000 - 19,999 lumens \$200 - 20,000 - 29,999 lumens \$300 - 30,000 - 39,999 lumens \$400 - >40,000 lumens	Per Lamp	DLC
LED LINEAR AMBIENT			
Direct/indirect linear ambient 2 ft. new luminaire	\$20.00	Per Fixture	DLC
Direct/indirect linear ambient 4 ft. new luminaire	\$40.00		
Direct/indirect linear ambient 8 ft. new luminaire	\$50.00		

Commercial and Industrial Incentives - HVAC

HVAC Requirements

- Meet or Exceed 2023 Federal Standard Update; eCFR::10CFR 430.32 - Energy and water conservation standards and their compliance dates
- An AHRI Certificate is required for new electric HVAC units. AHRI Certificates can be downloaded from <http://www.ahridirectory.org>.
- Manufacturers Specification Sheet Required
- Incentive calculation is based on the Electric Unitary HVAC equipment capacity at AHRI Certified Net Capacity and Rating at operating conditions; it is not based on the nominal Electric Unitary HVAC equipment capacity. This information will be provided on the certified AHRI documentation.
- For Split Systems, both indoor and outdoor components must be replaced to qualify for an incentive.
- If more than one efficiency qualification is present (ex: EER & IEER), equipment specification must meet or exceed both ratings.
- Dual Enthalpy Economizer Control
 - Incentive is available with new installation on qualifying Electric Unitary HVAC equipment only.
- Ground Source Heat Pump
 - Open loop Ground Source Heat Pump equipment are not eligible for incentives.
 - Incentives are based on cooling capacity. The equipment must meet both cooling EER and COP efficiency requirements to qualify.

Instant Discounts: HVAC

- JCP&L customers must pursue Instant Discount rebates through the program approved participating distributors wherever an Instant Discount is available for qualified HVAC equipment.
- The prescriptive incentive application will NOT be available for equipment categories that are eligible for Instant Discounts.
- Pre-approval is not required for HVAC equipment eligible for Instant Discounts.

HVAC INCENTIVE OVERVIEW

HVAC Equipment Description	Qualifying Efficiency	Incentive	Unit	Energy Efficiency Standard
UNITARY - AIR CONDITIONERS & HEAT PUMPS - AIR COOLED < 5.4 TONS (65,000 BTU/HR) RESIDENTIAL UNITS, SINGLE PHASE POWER - AC ONLY - SPLIT OR PACKAGED				
Unitary HVAC Single Package System, <5.4 Tons, Tier 1	≥15.2 SEER2 ≥11.5 EER2 Energy Star	\$75.00	Per Ton	eCFR::10CFR 430.32 - Energy and water conservation standards and their compliance dates*
Unitary HVAC Split System, <5.4 Tons, Tier 1	≥15.2 SEER2 ≥12 EER2 Energy Star			
Unitary HVAC Single Package System, <5.4 Tons, Tier 2	≥17.1 SEER2 ≥11.5 EER2 Energy Star			
Unitary HVAC Split System, <5.4 Tons, Tier 2	≥16 SEER2 ≥12 EER2 Energy Star			
HEAT PUMPS - SPLIT OR PACKAGED				
Air Source Heat Pump, Single Package, <5.4 Tons, Tier 1	≥15.2 SEER2 ≥10.6 EER2 ≥7.2 HSPF2 Energy Star	\$100.00	Per Ton	eCFR::10CFR 430.32 - Energy and water conservation standards and their compliance dates*
Air Source Heat Pump, Split System, <5.4 Tons, Tier 1	≥15.2 SEER2 ≥11.7 EER2 ≥7.8 HSPF2 Energy Star			
Air Source Heat Pump, Single Package, <5.4 Tons, Tier 2	≥17.1 SEER2 ≥10.6 EER2 ≥7.2 HSPF2 Energy Star			
Air Source Heat Pump, Split System, <5.4 Tons, Tier 2	≥17.1 SEER2 ≥11.7 EER2 ≥7.8 HSPF2 Energy Star			

*Updated efficiency and efficiency standards effective May 1, 2023.

HVAC INCENTIVE OVERVIEW

HVAC Equipment Description	Qualifying Efficiency	Incentive	Unit	Energy Efficiency Standard
UNITARY - AIR CONDITIONERS < 5.4 TONS (65,000 BTU/HR) COMMERCIAL UNITS, 3 PHASE POWER AIR CONDITIONING (AC) ONLY - SPLIT OR PACKAGED TIER 1				
Single Package Vertical Air Conditioner, <5.4 Tons, Tier 1- Three Phase	≥16 SEER	See Distributors for Incentive Amounts		eCFR::10CFR 430.32 - Energy and water conservation standards and their compliance dates*
Unitary HVAC Single Package System, <5.4 Tons - Eligible for Instant Discounts	≥16 SEER			
Unitary HVAC Split System, <5.4 Tons - Eligible for Instant Discounts	≥16 SEER			
UNITARY - AIR CONDITIONERS < 5.4 TONS (65,000 BTU/HR) AIR CONDITIONING (AC) ONLY COMMERCIAL UNITS, 3 PHASE - SPLIT OR PACKAGED TIER 2				
Single Package Vertical Air Conditioner, <5.4 Tons, Tier 2- Three Phase	≥18 SEER	See Distributors for Incentive Amounts		eCFR::10CFR 430.32 - Energy and water conservation standards and their compliance dates*
Unitary HVAC Single Package System, <5.4 Tons - Eligible for Instant Discounts	≥18 SEER			
Unitary HVAC Split System, <5.4 Tons - Eligible for Instant Discounts	≥18 SEER			
AIR SOURCE HEAT PUMPS - SPLIT OR PACKAGED TIER 1				
Air Source Heat Pump, Single Package, <5.4 Tons - Eligible for Instant Discounts*	≥16 SEER ≥8.5 HSPF	See Distributors for Incentive Amounts		eCFR::10CFR 430.32 - Energy and water conservation standards and their compliance dates*
Air Source Heat Pump, Split System, <5.4 Tons - Eligible for Instant Discounts*	≥16 SEER ≥9.2 HSPF			
AIR SOURCE HEAT PUMPS - SPLIT OR PACKAGED TIER 2				
Air Source Heat Pump, Single Package, <5.4 Tons - Eligible for Instant Discounts*	≥18 SEER ≥9.5 HSPF	See Distributors for Incentive Amounts		eCFR::10CFR 430.32 - Energy and water conservation standards and their compliance dates*
Air Source Heat Pump, Split System, <5.4 Tons - Eligible for Instant Discounts*	≥18 SEER ≥10 HSPF			

*Updated efficiency and efficiency standards effective May 1, 2023.

HVAC INCENTIVE OVERVIEW

HVAC Equipment Description	Qualifying Efficiency	Incentive	Unit	Energy Efficiency Standard
UNITARY - AIR CONDITIONERS >= 5.4 TONS (65,000 BTU/HR) AIR CONDITIONING (AC) ONLY - SPLIT OR PACKAGED				
Unitary HVAC Single and Split Package System, ≥5.4 Tons & <11.25 Tons, Tier 1, Tier 2*	Electric Resistance or No Heating ≥14.8 IEER ≥11.2 EER All Other ≥14.6 IEER ≥11 EER	\$80.00	Per Ton	eCFR::10CFR 430.32 - Energy and water conservation standards and their compliance dates*
Unitary HVAC Single and Split Package System, ≥11.25 Tons & <20 Tons, Tier 1, Tier 2*	Electric Resistance or No Heating ≥14.2 IEER ≥11 EER All Other ≥14 IEER ≥10.8 EER			
Unitary HVAC Single and Split Package System, ≥20 Tons & <63.33 Tons, Tier 1, Tier 2*	Electric Resistance or No Heating ≥13.2 IEER ≥10 EER All Other ≥13 IEER ≥9.8 EER			
Unitary HVAC Single and Split Package System, ≥63.33 Tons, Tier 1, Tier 2*	Electric Resistance or No Heating ≥12.5 IEER ≥9.7 EER All Other ≥12.3 IEER ≥9.5 EER			

*Updated efficiency and efficiency standards effective May 1, 2023.

HVAC INCENTIVE OVERVIEW

HVAC Equipment Description	Qualifying Efficiency	Incentive	Unit	Energy Efficiency Standard
AIR SOURCE HEAT PUMP SPLIT OR PACKAGED				
Air Source Heat Pump, Single Package or Split System, ≥5.4 Tons & <11.25 Tons, Tier 1, Tier 2*	Electric Resistance or No Heating ≥14.1 IEER ≥11 EER ≥3.4 COP All Other ≥13.9 IEER ≥10.8 EER ≥3.4 COP	\$80.00	Per Ton	eCFR::10CFR 430.32 - Energy and water conservation standards and their compliance dates*
Air Source Heat Pump, Single Package or Split System, ≥11.25 Tons & <20 Tons, Tier 1, Tier 2*	Electric Resistance or No Heating ≥13.5 IEER ≥10.6 EER ≥3.3 COP All Other ≥13.3 IEER ≥10.4 EER ≥3.3 COP			
Air Source Heat Pump, Single Package or Split System, ≥20 Tons, Tier 1, Tier 2*	Electric Resistance or No Heating ≥12.5 IEER ≥9.5 EER ≥3.2 COP All Other ≥12.3 IEER ≥9.3 EER ≥3.2 COP			
SINGLE PACKAGE VERTICAL AIR CONDITIONER				
Single Package Vertical Air Conditioner <5.4 Tons, Tier 1, Tier 2*	>11.6 EER	\$45.00	Per Ton	eCFR::10CFR 430.32 - Energy and water conservation standards and their compliance dates*
Single Package Vertical Air Conditioner, ≥5.4 Tons & <11.25 Tons, Tier 1, Tier 2*	>10.5 EER			
Single Package Vertical Air Conditioner, >11.25 Tons & <20 Tons, Tier 1, Tier 2*	>10.5 EER			

*Updated efficiency and efficiency standards effective May 1, 2023.

HVAC INCENTIVE OVERVIEW

HVAC Equipment Description	Qualifying Efficiency	Incentive	Unit	Energy Efficiency Standard
SINGLE PACKAGE VERTICAL HEAT PUMP				
Single Package Vertical Heat Pump, <5.4 Tons, Tier 1, Tier 2*	>11.6 EER >3.5 COP	\$45.00	Per Ton	eCFR::10CFR 430.32 - Energy and water conservation standards and their compliance dates*
Single Package Vertical Heat Pump, ≥5.4 Tons & <11.25 Tons, Tier 1, Tier 2*	>10.5 EER >3.2 COP			
Single Package Vertical Heat Pump, ≥11.25 Tons & <20 Tons, Tier 1, Tier 2*	>10.5 EER >3.2 COP			
WATER SOURCE HEAT PUMP (Water To Air) - <1.4 to <11.25 TONS				
Water Source Heat Pump, <1.4 Tons , Tier 1 -5% above baseline*	>12.8 EER >4.5 COP	\$50.00	Per Ton	eCFR::10CFR 430.32 - Energy and water conservation standards and their compliance dates*
Water Source Heat Pump, <1.4 Tons , Tier 2 -12% above baseline*	>13.7 EER >4.8 COP	\$100.00		
Water Source Heat Pump, ≥1.4 Tons & <5.4 Tons, Tier 1 -5% above baseline*	>13.7 EER >4.5 COP	\$50.00		
Water Source Heat Pump, ≥1.4 Tons & <5.4 Tons, Tier 2 -12% above baseline*	>14.6 EER >4.8 COP	\$100.00		
Water Source Heat Pump, ≥5.4 Tons & <11.25 Tons, Tier 1 -5% above baseline*	>13.7 EER >4.5 COP	\$50.00		
Water Source Heat Pump, ≥5.4 Tons & <11.25 Tons, Tier 2 -12% above baseline*	>14.6 EER >4.8 COP	\$100.00		
GEOHERMAL HEAT PUMPS (GROUND SOURCE/GROUND WATER SOURCE)				
Ground Water (water-to-air) ≤11.25 Tons, Tier 1	>18.9 EER >3.4 COP	\$80.00	Per Ton	Tier 1 Must be >5% above min. efficiency specified in ASHRAE 90.1-2013. Tier 2 Must be >12% above min. efficiency specified in ASHRAE 90.1-2013*
Ground Water (water-to-air) ≤11.25 Tons, Tier 2	>20.2 EER >3.6 COP	\$100.00		
Ground Loop (brine-to-air) ≤11.25 Tons, Tier 1	>14.8 EER >3.4 COP	\$80.00		
Ground Loop (brine-to-air) ≤11.25 Tons, Tier 2	>15.8 EER >3.6 COP	\$100.00		

*Updated efficiency and efficiency standards effective May 1, 2023.

HVAC INCENTIVE OVERVIEW

HVAC Equipment Description	Qualifying Efficiency	Incentive	Unit	Energy Efficiency Standard
DUCTLESS, MINI SPLIT AIR CONDITIONERS OR HEAT PUMPS				
Ductless Mini-Split Air Conditioners	>20 SEER >13 EER	\$125.00	Per Ton	eCFR::10CFR 430.32 - Energy and water conservation standards and their compliance dates*
Ductless Mini-Split Heat Pump	>20 SEER >13 EER >10 HSPF			
PACKAGED TERMINAL AIR CONDITIONERS OR HEAT PUMPS				
PTAC < 7,000 BTU/h	>12.8 EER	See Distributors for Incentive Amounts		eCFR::10CFR 430.32 - Energy and water conservation standards and their compliance dates*
PTHP < 7,000 BTU/h	>12.8 EER >3.5 COP			
PTAC ≥ 7,000 BTU/h ≤ 15,000 BTU/h	EER=14-(0.3* Capacity)/1000			
PTHP ≥ 7,000 BTU/h ≤ 15,000 BTU/h	EER=14-(0.3* Capacity)/1000 COP=3.7-(0.052* Capacity/1000)			
PTAC > 15,000 BTU/h	>10.2 EER			
PTHP > 15,000 BTU/h	>10.2 EER >3.1 COP			
OTHER HVAC EQUIPMENT				
Occupancy Controlled Thermostat		\$75.00	Per Thermostat	Product must be UL Listed, or listed by equivalent OSHA Nationally Recognized Testing Laboratory (NRTL). Control or Thermostat must be installed on electric HVAC equipment only.
Dual Enthalpy Economizer Controls		\$250.00	Per Unit	

*Updated efficiency and efficiency standards effective May 1, 2023.

Midstream - Instant Discount HVAC Incentives

HVAC Instant Discount (Midstream) Requirements

- JCP&L customers must pursue Instant Discount rebates through the program approved participating distributors wherever an Instant Discount is available for qualified HVAC equipment.
- The prescriptive incentive application will NOT be available for equipment categories that are eligible for Instant Discounts.
- Instant Discounts (Midstream incentives) are provided at the distributor/vendor level
- Minimum customer contribution of \$1 per product.

Midstream - Instant Discount HVAC Incentives				
HVAC Equipment Description	Qualifying Efficiency	Incentive	Unit	Energy Efficiency Standard
UNITARY - AIR CONDITIONERS < 5.4 TONS (65,000 BTU/HR) COMMERCIAL UNITS, 3 PHASE POWER AIR CONDITIONING (AC) ONLY - SPLIT OR PACKAGED TIER 1				
Single Package Vertical Air Conditioner, <5.4 Tons, Tier 1- Three Phase	≥16 SEER	See Distributors for Incentive Amounts		eCFR::10CFR 430.32 - Energy and water conservation standards and their compliance dates*
Unitary HVAC Single Package System, <5.4 Tons	≥16 SEER			
Unitary HVAC Split System, <5.4 Tons	≥16 SEER			
UNITARY - AIR CONDITIONERS < 5.4 TONS (65,000 BTU/HR) AIR CONDITIONING (AC) ONLY COMMERCIAL UNITS, 3 PHASE - SPLIT OR PACKAGED TIER 2				
Single Package Vertical Air Conditioner, <5.4 Tons, Tier 2- Three Phase	≥18 SEER	See Distributors for Incentive Amounts		eCFR::10CFR 430.32 - Energy and water conservation standards and their compliance dates*
Unitary HVAC Single Package System, <5.4 Tons	≥18 SEER			
Unitary HVAC Split System, <5.4 Tons	≥18 SEER			
AIR SOURCE HEAT PUMPS - SPLIT OR PACKAGED TIER 1				
Air Source Heat Pump, Single Package, <5.4 Tons	≥16 SEER ≥8.5 HSPF	See Distributors for Incentive Amounts		eCFR::10CFR 430.32 - Energy and water conservation standards and their compliance dates*
Air Source Heat Pump, Split System, <5.4 Tons	≥16 SEER ≥9.2 HSPF			
AIR SOURCE HEAT PUMPS - SPLIT OR PACKAGED TIER 2				
Air Source Heat Pump, Single Package, <5.4 Tons	≥18 SEER ≥9.5 HSPF	See Distributors for Incentive Amounts		eCFR::10CFR 430.32 - Energy and water conservation standards and their compliance dates*
Air Source Heat Pump, Split System, <5.4 Tons	≥18 SEER ≥10 HSPF			

*Updated efficiency and efficiency standards effective May 1, 2023.

Midstream - Instant Discount HVAC Incentives

HVAC Equipment Description	Qualifying Efficiency	Incentive	Unit	Energy Efficiency Standard
PACKAGED TERMINAL AIR CONDITIONERS OR HEAT PUMPS				
PTAC < 7,000 BTU/h	>12.8 EER	See Distributors for Incentive Amounts		eCFR::10CFR 430.32 - Energy and water conservation standards and their compliance dates*
PTHP < 7,000 BTU/h	>12.8 EER >3.5 COP			
PTAC ≥ 7,000 BTU/h ≤ 15,000 Btu/h	EER=14-(0.3* Capacity)/1000			
PHTP ≥ 7,000 BTU/h ≤ 15,000 Btu/h	EER=14-(0.3* Capacity)/1000 COP=3.7-(0.052*Capacity/1000)			
PTAC > 15,000 BTU/h	>10.2 EER			
PHTP > 15,000 BTU/h	>10.2 EER >3.1 COP			

*Updated efficiency and efficiency standards effective May 1, 2023.

Commercial and Industrial Incentives - Refrigeration

Refrigeration Equipment Requirements

- All eligible refrigeration control devices must be listed by UL or other OSHA approved Nationally Recognized Testing Laboratory (NRTL) in accordance with the applicable US standards.
- Door Heater Anti-Sweat Refrigeration Controls: Replacement of existing refrigeration controls are not eligible for an incentive. Doors must have either heat reflective-treated glass and/or be gas filled.
- Floating Head Controls:
 1. Baseline system must have a fixed saturated condensing temperature;
 2. Systems must have variable speed condenser fan controls;
 3. Temperatures must be reset based on ambient wet bulb temperatures for evaporative cooled systems and dry bulb temperatures for air cooled systems
- Night Curtains: For existing refrigerated cases, used for non-frozen products which do not have doors or other means of full or partial closure to reduce cold air loss with the ambient room air.
- Refrigeration Display Case Doors: Replacement of existing refrigerator doors/covers are not eligible for an incentive; Incentives are only eligible for adding doors/covers to existing open refrigerated cases.
- Reach-In Cooler/Freezer Fan Motor Control: Incentives are provided for the replacement of existing refrigerated or freezer case motors with new electronic commutated fractional motors.

REFRIGERATION EQUIPMENT INCENTIVE OVERVIEW			
Refrigeration Equipment Description	Incentive	Unit	Energy Efficiency Standard
REFRIGERATION			
Anti-Fog Film	\$8.00	Per Sq. Ft.	N/A
ANTI-SWEAT HEAT CONTROL Door Heater Control for Cooler/Medium Temp door	\$50.00	Per Door	UL or other OSHA-approved Nationally Recognized Testing Laboratory (NRTL) in accordance with applicable US standards
ANTI-SWEAT HEAT CONTROL Door Heater control for Freezer/Low Temp door			
EVAPORATOR/COMPRESSOR CONTROLLER			
Evaporator Fan Controller on Existing Shaded-Pole Motor	\$75.00	Per Control	UL or other OSHA-approved Nationally Recognized Testing Laboratory (NRTL) in accordance with applicable US standards
Floating-Head Pressure Controls		Per Ton	
NIGHT COVERS			
Night Cover - Low temp case temperature (-32°F to 0°F)	\$4.00	Per Linear Foot of width - capped at \$500 Per Case	UL or other OSHA-approved Nationally Recognized Testing Laboratory (NRTL) in accordance with applicable US standards
Night Cover - Medium Temp, case temperature (0°F to 32°F)			
Night Cover - High Temp case temperature (32°F to 55°F)			
Night Covers - Open Reach-In Coolers			

REFRIGERATION EQUIPMENT INCENTIVE OVERVIEW

Refrigeration Equipment Description	Incentive	Unit	Energy Efficiency Standard
DISPLAY CASE DOORS			
Open Display Cases	\$25.00	Per Linear Foot of Width - Capped at \$600 Per Case	UL or other OSHA-approved Nationally Recognized Testing Laboratory (NRTL) in accordance with applicable US standards
REACH-IN COOLER/FREEZER FAN MOTOR CONTROL			
Electronically Commutated Motor Evaporator Fan Motor control	\$75.00	Per Unit	UL or other OSHA-approved Nationally Recognized Testing Laboratory (NRTL) in accordance with applicable US standards
Permanent Split Capacitor Motor Evaporator Fan Motor control			
Shaded Pole Motor Evaporator Fan Motor control			
WALK-IN COOLER/FREEZER FAN MOTOR CONTROL			
Electronically Commutated Motor Evaporator Fan Motor control	\$75.00	Per Unit	UL or other OSHA-approved Nationally Recognized Testing Laboratory (NRTL) in accordance with applicable US standards
Shaded Pole Motor Evaporator Fan Motor control			
Permanent Split Capacitor Motor Evaporator Fan Motor control			
VARIABLE SPEED REFRIGERATION COMPRESSOR			
Variable Speed Refrigeration Compressor	\$1,000.00	Per Unit	ASHRAE 90.1-2016
REACH-IN DOOR CLOSER			
Reach-in Automatic Door Closer - Cooler	\$50.00	Per Unit	UL or other OSHA-approved Nationally Recognized Testing Laboratory (NRTL) in accordance with applicable US standards
Reach-in Automatic Door Closer - Freezer	\$75.00		
GASKETS			
Door Gasket - Cooler	\$4.00	Per Ln. Ft.	UL or other OSHA-approved Nationally Recognized Testing Laboratory (NRTL) in accordance with applicable US standards
Door Gasket - Freezer	\$4.00		
STRIP CURTAINS			
Strip Curtains for Walk-In Coolers and Freezers	\$5.00	Per Sq. Ft.	UL or other OSHA-approved Nationally Recognized Testing Laboratory (NRTL) in accordance with applicable US standards
Strip Curtains - Cooler, Convenience Store			
Strip Curtains - Cooler, Restaurant			
Strip Curtains - Cooler, Supermarket			
Strip Curtains - Freezer, Convenience Store			
Strip Curtains - Freezer, Restaurant			
Strip Curtains - Freezer, Supermarket			

Commercial and Industrial Incentives - Variable Frequency Drives

Variable Frequency Drives Requirements

- The controlled horsepower HP is the cumulative motor HP controlled by each VFD
- Controlled HP less than the listed eligible values in the tables below are eligible for incentives. However, controlled motor sizes exceeding the listed eligible values in the table below should pursue incentives through the Custom measure application.
- If the controlled HP falls in between sizes listed in the incentive table, the incentive will be based on the lower HP listed.

VARIABLE FREQUENCY DRIVES INCENTIVE OVERVIEW			
Variable Frequency Drive Description	Incentive	Unit	Energy Efficiency Standard
MOTORS FROM 2 HP TO 100 HP. FOR THE FOLLOWING APPLICATIONS ONLY			
Supply Air Fan	2 HP - \$500	Per Drive	Horsepower (HP) refers to nameplate HP of the motor controlled by the drive. Product must be UL Listed, or listed by equivalent OSHA Nationally Recognized Testing Laboratory.
Return Air Fan	3HP - \$600		
Chilled Water Pump	4 HP - \$700		
Heating Hot Water Pump	5HP - \$800		
Water Source Heat Pump Circulation Pump	7.5 HP - \$900		
Cooling Tower Fan	10 HP - \$1,100		
Boiler Feedwater Pump	15 HP - \$1,350		
	20 HP - \$1,500		
	25 HP - \$1,600		
	30 HP - \$1,800		
	40 HP - \$2,000		
	50 HP - \$2,500		
	60 HP - \$3,000		
	75 HP - \$3,750		
	100 HP - \$5,000		
MOTORS LARGER THAN 100 HP BUT NO MORE THAN 200 HP. FOR THE FOLLOWING APPLICATIONS ONLY			
Supply Air Fan	\$40.00	Per HP	Horsepower (HP) refers to nameplate HP of the motor controlled by the drive. Product must be UL Listed, or listed by equivalent OSHA Nationally Recognized Testing Laboratory.
Return Air Fan			
Chilled Water Pump			
Heating Hot Water Pump			
Water Source Heat Pump Circulation Pump			
Cooling Tower Fan			
Boiler Feedwater Pump			

Commercial and Industrial Incentives - Electrically Commutated Motors (ECM)

Electrically Commutated Motors Requirements

- Incentive is only available for Electrically Commutated Motors.
- Polyphase Small Electric Motors, Capacitor-Start Capacitor-Run and Capacitor-Start Induction-Run Small Electric Motors are ineligible for incentives.
- NEMA Design A, NEMA Design B, and IEC Design N Motors (Excluding Fire Pump Electric Motors) and/or NEMA Design C and IEC Design H Motors may be considered under the custom pathway. Motors of this type will be evaluated against ASHRE 90.1 Tables 10.8.1-1 and 10.8.1-2.
- EC Motors must meet or exceed efficiency values required by NJ Energy Code to be eligible (ASHRAE 90.1-2016) . Motor Horsepower rating, speed, and intended application shall be used by the Program Manager to determine the appropriate baseline qualifying efficiency

ELECTRICALLY COMMUTATED MOTORS INCENTIVE OVERVIEW			
Electrically Commutated Motor Description	Incentive	Unit	Energy Efficiency Standard
EC MOTORS			
<1 HP	\$150.00	Per Unit	Horsepower (HP) refers to nameplate HP of the motor. Product must be UL Listed, or listed by equivalent OSHA Nationally Recognized Testing Laboratory.
1 HP	\$150.00		
2 HP	\$175.00		
3-5 HP	\$250.00		
6-10 HP	\$500.00		
11+ HP	\$750.00		

Commercial and Industrial Incentives - Commercial Kitchen Equipment

Commercial Kitchen Equipment Requirements

- Equipment must be qualified by the current version of ENERGY STAR or CEE
- Refrigeration cases with remote systems do not qualify.
- Ice machines must qualify on one of the two following lists:
 - Tier 1: ENERGY STAR Certified Commercial Ice Machines: <https://www.energystar.gov/productfinder/product/certified-commercial-ice-machines/results>
 - Tier 2: CEE Commercial Kitchens Ice Machines – Must be on CEE Tier 2 Ice Machines tab: <https://library.cee1.org/content/commercial-kitchens-icemachines-qualifying-product-list>

COMMERCIAL KITCHEN EQUIPMENT INCENTIVE OVERVIEW				
Commercial Kitchen Equipment Description	Incentive	Unit	Energy Efficiency Standard	
COMMERCIAL DISHWASHERS				
UNDER COUNTER				
Commercial Dishwasher - Under Counter LT Electric	\$75.00	Per Unit	Equipment must be qualified by the current version of ENERGY STAR or CEE	
Commercial Dishwasher - Under Counter HT Electric	\$350.00			
DOOR TYPE				
Commercial Dishwasher - Door Type LT Electric	\$400.00	Per Unit		
Commercial Dishwasher - Door Type HT Electric	\$600.00			
SINGLE TANK CONVEYOR				
Commercial Dishwasher - Single Tank Conveyor LT Electric	\$400.00	Per Unit		
Commercial Dishwasher - Single Tank Conveyor HT Electric	\$1,000.00			
MULTI TANK CONVEYOR				
Commercial Dishwasher - Multiple Tank Conveyor LT Electric	\$1,000.00	Per Unit		
Commercial Dishwasher - Multiple Tank Conveyor HT Electric	\$1,500.00			
COOKING EQUIPMENT				
Standarr Vat Fryer - Electric	\$200.00	Per Unit		
Large Vat Fryer - Electric	\$200.00			
Griddles - Electric	\$300.00			

COMMERCIAL KITCHEN EQUIPMENT INCENTIVE OVERVIEW

Commercial Kitchen Equipment Description	Incentive Up To	Unit	Energy Efficiency Standard
COMBINATION AND CONVECTION OVENS			
Convection Ovens	\$350.00	Per Unit	Equipment must be qualified by the current version of ENERGY STAR or CEE
Combination Oven/Steamer	\$1,000.00		
ICE MACHINES			
ENERGY STAR Commercial Ice Machine - 0–300 lbs/day - tier 1	\$75.00	Per Unit	Tier 1: ENERGY STAR Certified Commercial Ice Machines: https://www.energystar.gov/product-finder/product/certified-commercial-ice-machines/results ; Tier 2: CEE Commercial Kitchens Ice Machines: Must be on CEE Tier 2 Ice Machines tab: https://library.cee1.org/content/commercial-kitchens-ice-machines-qualifying-product-list
ENERGY STAR Commercial Ice Machine - 0–300 lbs/day - tier 2	\$100.00		
ENERGY STAR Commercial Ice Machine - 301–500 lbs/day - tier 1	\$100.00		
ENERGY STAR Commercial Ice Machine - 301–500 lbs/day - tier 2	\$150.00		
ENERGY STAR Commercial Ice Machine - 501–1000 lbs/day - tier 1	\$150.00		
ENERGY STAR Commercial Ice Machine - 501–1000 lbs/day - tier 2	\$200.00		
ENERGY STAR Commercial Ice Machine - 1001–1500lbs/day - tier 1	\$200.00		
ENERGY STAR Commercial Ice Machine - 1001–1500lbs/day - tier 2	\$300.00		
SOLID DOOR REACH-IN REFRIGERATORS			
ENERGY STAR Commercial Solid Door Refrigerator - < 15 ft3	\$75.00	Per Unit	Equipment must be qualified by the current version of ENERGY STAR or CEE
ENERGY STAR Commercial Solid Door Refrigerator - > 15 to < 30 ft3	\$100.00		
ENERGY STAR Commercial Solid Door Refrigerator - > 30 to < 50 ft3	\$150.00		
ENERGY STAR Commercial Solid Door Refrigerator - ≥ 50 ft3	\$200.00		
SOLID DOOR REACH-IN FREEZERS			
ENERGY STAR Commercial Solid Door Freezer - < 15 ft3	\$100.00	Per Unit	Equipment must be qualified by the current version of ENERGY STAR or CEE
ENERGY STAR Commercial Solid Door Freezer - > 15 to < 30 ft3	\$200.00		
ENERGY STAR Commercial Solid Door Freezer - > 30 to < 50 ft3	\$300.00		
ENERGY STAR Commercial Solid Door Freezer - ≥ 50 ft3	\$500.00		

COMMERCIAL KITCHEN EQUIPMENT INCENTIVE OVERVIEW

Commercial Kitchen Equipment Description	Incentive Up To	Unit	Energy Efficiency Standard
GLASS DOOR REACH-IN REFRIGERATORS			
ENERGY STAR Commercial Glass Door Refrigerator - < 15 ft3	\$75.00	Per Unit	Equipment must be qualified by the current version of ENERGY STAR or CEE
ENERGY STAR Commercial Glass Door Refrigerator - > 15 to < 30 ft3	\$100.00		
ENERGY STAR Commercial Glass Door Refrigerator - > 30 to < 50 ft3	\$125.00		
ENERGY STAR Commercial Glass Door Refrigerator - ≥ 50 ft3	\$150.00		
GLASS DOOR REACH-IN FREEZERS			
ENERGY STAR Commercial Glass Door Freezer - < 15 ft3	\$200.00	Per Unit	Equipment must be qualified by the current version of ENERGY STAR or CEE
ENERGY STAR Commercial Glass Door Freezer - > 15 to < 30 ft3	\$250.00		
ENERGY STAR Commercial Glass Door Freezer - > 30 to < 50 ft3	\$300.00		
ENERGY STAR Commercial Glass Door Freezer - ≥ 50 ft3	\$300.00		
GLASS DOOR REACH-IN FREEZERS			
ENERGY STAR Beverage Vending Machine	\$75.00	Per Unit	Equipment must be qualified by the current version of ENERGY STAR or CEE
Pre-Rinse Spray Valve - Electric Water Heating	\$10.00		N/A

Commercial and Industrial Incentives - Commercial Appliances

Commercial Appliances Requirements

- Must appear on the current ENERGY STAR qualified product list
- Product must be qualified by UL or other OSHA-approved Nationally Recognized Testing Laboratory in accordance with applicable US standards

COMMERCIAL APPLIANCES INCENTIVE OVERVIEW			
Commercial Appliances Description	Incentive	Unit	Energy Efficiency Standard
COMMERCIAL CLOTHES WASHER			
Tier 1	\$100.00	Per Unit	Must be qualified by the current version of ENERGY STAR. Modified Energy Factor (MEF) ≥ 2.2 , Integrated Water Factor IWF ≤ 4.5 .
Tier 2	\$200.00		Must be qualified by the current version of ENERGY STAR, and product specifications must indicate 10% improvement over Tier 1 MEF and IWF values .

Commercial and Industrial Incentives - Heat Pump Water Heaters

Heat Pump Water Heater Requirements

- Must appear on the current ENERGY STAR qualified product list
- Printout or screenshot from the ENERGY STAR qualified product list showing the specific manufacturer name and model number is required.

HEAT PUMP WATER HEATERS INCENTIVE OVERVIEW			
Heat Pump Water Heaters Description	Incentive	Unit	Energy Efficiency Standard
HEAT PUMP			
Heat Pump Electric Storage Water Heater, size > 55 gallons	\$1,000.00	Per Unit	ENERGY STAR
Heat Pump Electric Storage Water Heater, size \leq 55 gallons	\$750.00		

Commercial and Industrial Incentives - Plug Load Controls

Plug Load Controls Requirements

- Product must be qualified by UL or other OSHA-approved Nationally Recognized Testing Laboratory in accordance with applicable US standards

PLUG LOAD CONTROLS INCENTIVE OVERVIEW			
Plug Load Control Description	Incentive	Unit	Energy Efficiency Standard
PLUG LOAD CONTROLS			
Smart Power Strip	\$10.00	Per Unit	N/A
VENDING MACHINE CONTROLS			
Non-Refrigerated	\$50.00	Per Unit	N/A
Refrigerated	\$125.00		

Commercial and Industrial Incentives - Office Equipment

Office Equipment Requirements

- Must appear on the current ENERGY STAR qualified product list where applicable.
- Product must be qualified by UL or other OSHA-approved Nationally Recognized Testing Laboratory in accordance with applicable US standards
- Printout or screenshot from the ENERGY STAR qualified product list showing the specific manufacturer name and model number is required.

OFFICE EQUIPMENT INCENTIVE OVERVIEW			
Office Equipment Description	Incentive	Unit	Energy Efficiency Standard
OFFICE EQUIPMENT			
Monitors - C&I	\$5.00	Per Unit	ENERGY STAR
Computers - C&I	\$5.00		
Uninterruptible Power Supply (UPS)	\$40.00	Per kVA	
Imaging - C&I	\$10.00	Per Unit	
Small Network PC Controller	\$15.00	Per PC Controlled	N/A

Commercial and Industrial Incentives - Residential Appliances

Residential Appliances Requirements

- Must appear on the current ENERGY STAR qualified product list
- Printout or screenshot from the ENERGY STAR qualified product list showing the specific manufacturer name and model number is required.
- Product must be qualified by UL or other OSHA-approved Nationally Recognized Testing Laboratory in accordance with applicable US standards

RESIDENTIAL APPLIANCES INCENTIVE OVERVIEW			
Residential Appliances Description	Incentive	Unit	Energy Efficiency Standard
RESIDENTIAL APPLIANCES in C&I BUILDING - Non Commercial Duty			
Clothes Washer Tier 1	\$100.00	Per Unit	Tier 1: ENERGY STAR listed product. Tier 2: ENERGY STAR listed product, plus 10% improvement over ENERGY STAR performance requirements.
Clothes Washer Tier 2	\$100.00		
Clothes Dryer - Tier 1	\$50.00		
Refrigerators Tier 1	\$100.00		
Refrigerators Tier 2	\$100.00		
Freezer	\$50.00		
Dehumidifier	\$25.00		
Room Air Conditioner	\$25.00		
Water Cooler	\$50.00		

Commercial and Industrial Incentives - Agricultural

Agricultural Equipment Requirements

- Equipment must be approved by UL or other OSHA-approved Nationally Recognized Testing Laboratory in accordance with applicable US standards where applicable.

AGRICULTURAL EQUIPMENT INCENTIVE OVERVIEW			
Agricultural Equipment Description	Incentive	Unit	Energy Efficiency Standard
AGRICULTURAL			
Auto Milker Takeoff	\$90.00	Per Unit	N/A
Dairy Scroll Compressor	\$1,000.00		
HE VENTILATION FANS			
High Speed Fan 24" – 35"	\$30.00	Per Unit	N/A
High Speed Fan 36" - 47"	\$50.00		
High Speed Fan 48" - 71"	\$100.00		
Heat Reclaimers	\$1,000.00		
HIGH VOLUME LOW SPEED FANS (De-stratification)			
High Volume Low Speed Fan (HVLS) 16'	\$250.00	Per Unit	N/A
High Volume Low Speed Fan (HVLS) 18'	\$400.00		
High Volume Low Speed Fan (HVLS) 20'	\$500.00		
High Volume Low Speed Fan (HVLS) 22'	\$550.00		
High Volume Low Speed Fan (HVLS) 24'	\$600.00		
OTHER AGRICULTURAL EQUIPMENT			
Livestock Waterer	\$60.00	Per Unit	N/A
Dairy Vac Pump VSD Controls	\$1,000.00		
Dairy Refrigeration Tune-Up	\$200.00		
Engine Block Heater Timer	\$25.00		
Low Pressure Irrigation	\$100.00	Per Acre	

¹ The utilities reserve the right to include additional measures that are supported by established protocols or evaluation results in the industry to ensure we include a broad range of energy savings measures to maximize energy savings for customers and avoid market disruption (e.g. new NJCEP measures added in FY21).

² All rebates will be offered equal to or less than the "Up to" value.

Costs of these programs may be recovered through customer rates in accordance with New Jersey law. For a complete list of commercial, industrial, residential and low-income energy efficiency programs, please visit energysaveNJ.com.